

# *BLOOD*



**KRYOLAN**  
PROFESSIONAL MAKE-UP

MAKE-UP IS A SCIENCE



# Q&A

**A**lmost 70 years - that's the long history of the legendary Kryolan fake blood. In particular, the types of blood produced since then, some of which have even been made individually for actors and major (Hollywood) productions, have made Kryolan world-famous. When company founder Arnold Langer produced the first artificial blood for a theatrical production in the 1950s, this also set the starting point for the continuous development of an extensive product line.

To date, the artificial blood repertoire at Kryolan has been expanded to over 20 different types. From children-friendly products to realistic blood effects, including specialist lines for use in the mouth and eyes, Kryolan has it all.

The unique thing about it: products are always developed in collaboration with professionals from film, television, and stage. Precisely because film sets don't look like, for instance, regular apartments but are usually glaringly brightly lit, fake blood for film and television must have unique qualities. And when new camera technologies enter the market, Kryolan is often quick to also come up with product innovations.

So, it's definitely time to give Kryolan blood the honor it deserves and dedicate an in-depth Q&A to it. Our SFX designer Gregor Knape has already done make-up for film productions and explains in more detail which blood is best suited to use for which effect.

---

## **Why does fake blood from Kryolan look so real?**

Even a non-specialist can tell whether blood is real or fake at first glance. Real blood oxidizes in the air and turns from red to brown-black. However, this exact situation cannot be imitated one to one with fake blood, which is why there are different products for different situations. In the Kryolan range, you will find flowing blood, fast-drying blood, and imitation scab. Glycerine acts as a base ingredient when you want it to flow realistically. Dyes such as azorubine dissolve completely, coloring the formula while retaining the realistic transparency of real blood.

## **Is Kryolan's fake blood safe to use?**

Kryolan products are manufactured in compliance with European cosmetic guidelines. This means the products are perfectly safe when used according to their instructions. In contrast, many smaller "pro companies" put products on the market that work well but are often not safe and are distributed in an uncontrolled manner. Therefore, always make sure that the production meets specific guidelines when buying fake blood.

## **What kind of blood is best for taking photos?**

Blood that flows slowly, such as HD Blood, is best. The natural pathways it forms as it runs down look great in pictures. The fully opaque Special

Blood IEW works well in low light and even on dark clothes.

A good alternative to conventional blood are gel-like blood types such as HD Blood Gel, Blood Paste IEW, or our Woundfiller. HD Blood Gel is very shiny, and due to its transparency, lighter and deep red, almost black areas are being formed all by themselves. Opaque Blood Paste IEW is perfect for shooting creepy scenes in semi-darkness. Woundfiller is an airy mousse that helps loosen up the denser gels to create larger areas.

## **Which blood looks particularly good when shooting in HD/4K?**

Blood types such as Supreme Blood, HD Blood, or Drying Blood are best suited for high-resolution cameras. Opaque blood types such as Special Blood IEW would look too opaque in front of film cameras and like melted lipstick. In addition to the camera, however, the lighting is crucial: the darker the scene is lit, the better it is to work with opaque types of blood. It's best to do lighting tests before deciding on the type of blood.

## **How do I avoid smearing fake blood on the skin?**

Fresh Scratch is particularly easy to apply to the skin with a spatula or sponge to imitate minor cuts,

crusts, or abrasions. Once dry, it is smudge-proof. Drying Blood is wonderful for filling fresh stab wounds, for example. It can be applied as a liquid and dries quickly to an abrasion- and water-resistant film that shines like it's fresh. Due to its opaque quality, F/X Blood is also visible in dim light, which is why it is suitable for shooting in semi-darkness or on dark fabrics.

### **Which blood looks remarkably realistic when viewed with the naked eye?**

Supreme Blood and Drying Blood look remarkably realistic in daylight. HD Blood looks a bit more yellowish but still realistic when viewed with the naked eye.

### **What are fake Blood Capsules?**

Blood Capsules TF are cellulose capsules containing a special powder. They are specially designed to be used in the mouth, and when bitten, they foam up slightly and form a bright red blood effect when reacting with saliva. An alternative is to transfer Supreme Blood Internal into a cellulose capsule (Art. 04049). This will last a few days, and the blood will flow out of your mouth nicely.

### **Which blood can I put in my mouth?**

Supreme Blood Internal is based on special sugar solutions and can be swallowed without hesitation. Also super suitable, but with less good taste, is the Special Blood IEW.

### **What are Blood Sachets?**

Blood Sachets are made from transparent plastic film filled with Special Blood IEW that can easily be made to burst. They are mainly used when a "live" attack is shown. Due to the opacity of IEW, the blood effect works even with dark clothing. Even if the blood gets into the mouth, this is harmless. Nevertheless, the Blood Sachet should not be explicitly applied for use in the mouth.

### **Which blood can I use on the eyes without hesitation?**

"Bleeding eyes" on the screen are usually created with digital effects. That's why they look so realistic. However, it would not be possible to produce artificial blood that is so opaque and thick, which

is also compatible to use in the eyes. However, it is imperative for us to make safe products, which is why we have a special Kryolan Eyeblood in our repertoire. It gives you a strong, red tint – at least for a short time. Keep in mind to not use it in combination with contact lenses or when having irritated eyes. Best results will be received when it's applied into the outer corners of eye on the bottom lid. The result can last up to one minute. It's important to use Eyeblood almost directly after buying it. When opened, it has only a short shelf life.

### **How do I remove fake blood?**

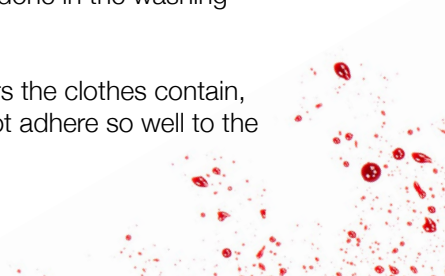
When removing fake blood, make-up remover or baby wipes should not be used, as the caring lotions in the wipes only push the dyes deeper into the skin. Real, solid soap removes fake blood from the skin better than wash emulsions or gels. The soap must be lathered vigorously with gentle agitation as the foam pulls the pigments and soluble dyes out of the pores. This process should be repeated until nothing discolors during foaming. Afterward, it is best to apply a skincare product.

### **Is artificial blood on clothes easy to wash off?**

Kryolan artificial bloods are primarily cosmetic products - they must be safe and well-tolerated by the skin. Unfortunately, however, high-quality cosmetic ingredients are not automatically easy to remove from clothes. Nevertheless, Kryolan does everything it can to produce safe products with optimal effects while ensuring washability.

Here are a few tips for you:

- 1) Rinse large amounts of blood from fabrics with plenty of cold water before washing, such as in the shower.
- 2) Apply a suitable detergent directly to the "bloodstain" and let it soak in before rinsing. If a yellowish or pinkish shadow remains, repeat the process. This can also be done in the washing machine.
- 3) The more synthetic fibers the clothes contain, the better! The dyes cannot adhere so well to the smooth fibers.





very easily washable +++ / ++ / + / - not washable



THEATER BLOOD SP4 A		DRYING BLOOD		SPECIAL BLOOD IEW		HD BLOOD		TRANSPARENT BLOOD	
---------------------	--	--------------	--	-------------------	--	----------	--	-------------------	--

Art. 04011 100 ml  
 Art. 04013 500 ml  
 Art. 04014 1000 ml

Art. 04075 50 ml  
 Art. 04076 200 ml  
 Art. 04079 5000 ml

Art. 04020 50 ml  
 Art. 04021 100 ml  
 Art. 04022 250 ml  
 Art. 04023 500 ml  
 Art. 04024 1000 ml  
 Art. 04025 5000 ml

Art. 04160 15 ml  
 Art. 04161 75 ml  
 Art. 04162 250 ml  
 Art. 04163 500 ml  
 Art. 04164 1000 ml

Art. 04000 50 ml  
 Art. 04001 100 ml  
 Art. 04002 250 ml  
 Art. 04003 500 ml  
 Art. 04004 1000 ml  
 Art. 04005 5000 ml

**CHARACTERISTICS**

Opaque blood-effect, low-priced for high-quantity usage. Bluish hue for warm lighting (incandescent lamps).

**CHARACTERISTICS**

Fast drying, transparent artificial blood, insensitive to moisture after drying. For filling touch-proof "fresh" wounds or for depicting blood-smear skin. Very realistic representation in all visual media.

**CHARACTERISTICS**

Opaque blood-effect available in many colors. Can be used on lips and in mouth. Bluish hue for warm lighting (incandescent lamps).

**CHARACTERISTICS**

Translucent, pigment-free blood. Cosmetic product, can be used on lips and near the eye. Very realistic color in all visual media. Yellowish hue for cold lighting (LED lamps).

**CHARACTERISTICS**

Translucent, pigment-free blood, flowing extremely slowly. Cosmetic product, can be used on lips and near the eye. Very realistic color in all visual media.

**APPLICATION**

From the bottle, brush, sponge, on props

**APPLICATION**

From the bottle, brush, sponge, on props, permanently in textiles

**APPLICATION**

From the bottle, brush, sponge, on props; especially on dark fabrics

**APPLICATION**

From the bottle, brush, sponge, on props, not suitable for tubes

**APPLICATION**

From the bottle, brush, sponge, on props

**VISCOSITY**

Flowing very quickly, like buttermilk

**VISCOSITY**

Fast flowing, like cream

**VISCOSITY**

Flowing quickly, like cream

**VISCOSITY**

Flowing slowly, like liquid honey

**VISCOSITY**

Flowing very slowly

**REMOVABILITY**

With warm water & soap

**REMOVABILITY**

With warm water & soap

**REMOVABILITY**

With warm water & soap

**REMOVABILITY**

With warm water & soap

**REMOVABILITY**

With warm water & soap

**WASHABILITY**

+

**WASHABILITY**

-

**WASHABILITY**

+++

**WASHABILITY**

+++

**WASHABILITY**

++

**COLORS**

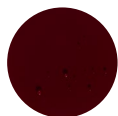


dark

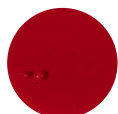


light

**COLORS**

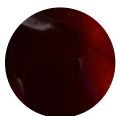


dark



light

**COLORS**



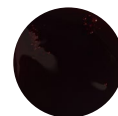
dark



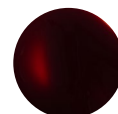
light

More colors available upon request

**COLORS**

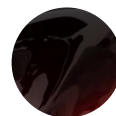


dark venous



light arterial

**COLORS**



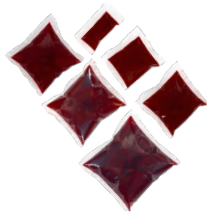
dark



light



medium



BLOOD SACHETS		BLOOD PASTE IEW		SHOW BLOOD		HD BLOOD GEL		WOUNDFILLER	
Art. 04050/01	2x1 cm	Art. 04130	50 ml	Art. 04083	10 ml	Art. 04166	50 ml	Art. 04501	15 ml
Art. 04050/02	2x2 cm	Art. 04132	200 ml					Art. 04500	30 ml
Art. 04051	3x3 cm	Art. 04134	750 ml					Art. 04503	750 ml
Art. 04052	4x4 cm								
Art. 04053	5x5 cm								
Art. 04054	6x6 cm								
<b>CHARACTERISTICS</b>		<b>CHARACTERISTICS</b>		<b>CHARACTERISTICS</b>		<b>CHARACTERISTICS</b>		<b>CHARACTERISTICS</b>	
Opaque blood-effect. Can be used on lips and in mouth. Bluish hue for warm lighting (incandescent lamps).		Opaque blood effect with a jelly-like consistency. Can be used on lips and in mouth. Bluish hue for warm lighting (incandescent lamps).		Low-priced blood effect in small tube, for Halloween/Carnival/practical jokes. Creamy consistency.		Translucent, pigment-free blood. Cosmetic product, can be used on lips and near the eye. Very realistic color in all visual media. Yellowish hue for cold lighting (LED lamps).		Jelly-like, lightweight blood effect. Glistens wet and can be used to add structure. Cosmetic product, can be used on lips and near the eye. For bigger injuries. Blueish hue for warm lighting (incandescent lamps).	
<b>APPLICATION</b>		<b>APPLICATION</b>		<b>APPLICATION</b>		<b>APPLICATION</b>		<b>APPLICATION</b>	
On props; especially on dark fabrics		From the bottle, brush, sponge, on props; especially on dark fabrics		From the tube, spatula		From the pump dispenser, spatula, on props, not suitable for tubes		From the jar, spatula, stipple sponge, on props, not suitable for tubes	
<b>VISCOSITY</b>		<b>VISCOSITY</b>		<b>VISCOSITY</b>		<b>VISCOSITY</b>		<b>VISCOSITY</b>	
Flowing quickly, like cream		Paste, yoghurt-like		Paste, like mayonnaise		Gel		Light jelly mousse	
<b>REMOVABILITY</b>		<b>REMOVABILITY</b>		<b>REMOVABILITY</b>		<b>REMOVABILITY</b>		<b>REMOVABILITY</b>	
With warm water & soap		With warm water & soap		With warm water & soap		With warm water & soap		With warm water & soap	
<b>WASHABILITY</b>		<b>WASHABILITY</b>		<b>WASHABILITY</b>		<b>WASHABILITY</b>		<b>WASHABILITY</b>	
+++		+++		+++		+++		+++	
<b>COLORS</b>		<b>COLORS</b>		<b>COLORS</b>		<b>COLORS</b>		<b>COLORS</b>	
 dark		 dark		 dark		 dark venous		 dark	
 light		 light				 light arterial		 light	

very easily washable



not washable



**FRESH SCRATCH**

Art. 04087 15 ml  
 Art. 04085/01 30 ml  
 Art. 04085/02 200 ml  
 Art. 04086 750 ml

**CHARACTERISTICS**

Blood paste, drying.  
 Dries to become a scab effect. Blueish hue for warm lighting (incandescent lamps).

**APPLICATION**

From the jar, spatula, stipple sponge, on props, not suitable for tubes

**VISCOSITY**

Viscous paste

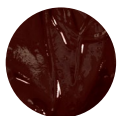
**REMOVABILITY**

With warm water & soap

**WASHABILITY**



**COLORS**



dark



light



waste oil

**FIXBLOOD**

Art. 04080 6 ml

**CHARACTERISTICS**

Quick-drying blood paste, contains solvents. Dries to a very sturdy effect. Opaque, not a cosmetic item. Bluish hue for warm lighting (incandescent lamps).

**APPLICATION**

From the tube, spatula

**VISCOSITY**

Sticky paste

**REMOVABILITY**

When dry, peel off OSP Remover

**WASHABILITY**



**COLORS**



dark



light

**BLOOD POWDER**

Art. 04120 10 g  
 Art. 04121 100 g  
 Art. 04123 400 g  
 Art. 04124 1000 g

**CHARACTERISTICS**

Light red, translucent powder that appears bright red when in contact with humidity.

**APPLICATION**

From the jar with brush or puff. Activate effect with transparent jelly or glycerine

**VISCOSITY**

Powder

**REMOVABILITY**

With warm water & soap

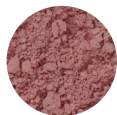
**WASHABILITY**



**COLORS**



dark



light

**BLOOD CAPSULES TF**

Art. 04046 10 pcs

**CHARACTERISTICS**

Cellulose capsules filled with a powder that results in a bright red, slightly frothy blood effect in the mouth.

**APPLICATION**

Capsules

**VISCOSITY**

Powder

**REMOVABILITY**

With warm water & soap

**WASHABILITY**



**COLORS**



**Washing recommendation for textiles:**

Lukewarm hand wash with wool detergent or mild detergent. Soak thoroughly, work in detergent, rinse after a short soaking time. Repeat if necessary. Do not rub.

**Washing recommendation for the skin**

With soap and lukewarm water. Massage the foam thoroughly, do not rub. If necessary, repeat the procedure. Do not use wet wipes.

**PRO TIP:**



**CELLULOSE CAPSULES**

Art. 04049 20 pcs

Fill with Supreme Blood Internal



MAKE-UP IS A SCIENCE